

07A	4 PINS	356-01079-00.	CCO1411-002	TS		24-11-99
06 A	CHANGE BAT PINS AND SK1 PADS			BRD		12-08-99
05 A	ADDED HOLE, ALSO RESTRICTED AREA			BRD		23/09/98
04 A	CHANGED HOLE SIZE. UL RATING			BRD		26/08/98
03 A	UPDATED MAYBE NEW CONTACTS			MAJ		2-11-97
02 A	CHANGED ROTATION OF PCB			MAJ		1-8-97
01 A	CORRECTED CONTACTS DUE TO MECH			MAJ		22-7-97
00 A	ORIGINAL			MAJ		1-7-97
REV/ISS	AMENDMENTS			DRAWN	CHKD	D.O. APVD DATE

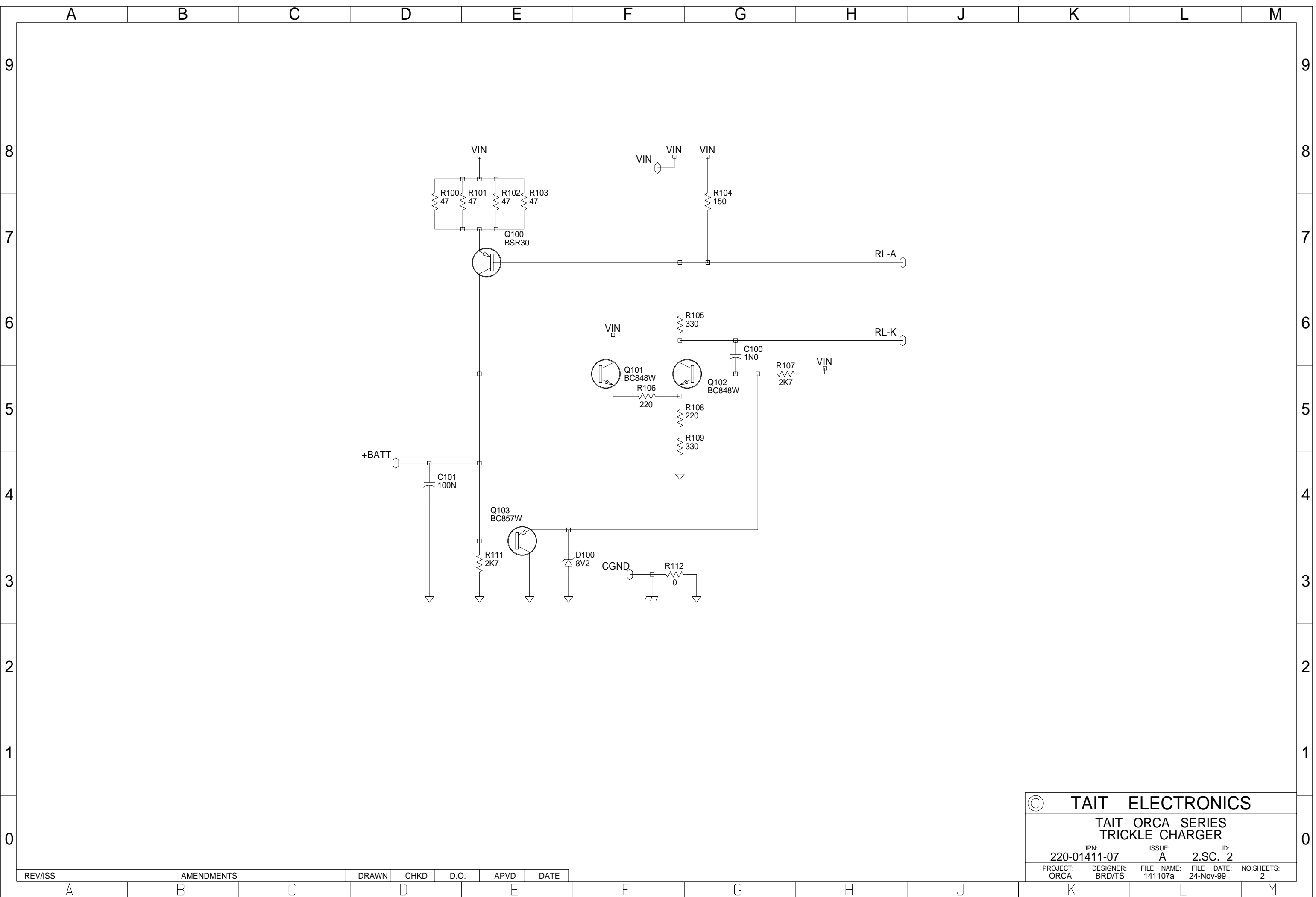


© **TAIT ELECTRONICS**

TAIT ORCA SERIES FAST CHARGER

IPN: **220-01411-07** ISSUE: **A** ID: **2.SC.1**

PROJECT: ORCA DESIGNER: BRD/TS FILE NAME: 141107a FILE DATE: 24-Nov-99 NO. SHEETS: 2



© TAIT ELECTRONICS	
TAIT ORCA SERIES TRICKLE CHARGER	
IPN: 220-01411-07	ID: 2.SC. 2
ISSUE: A	FILE DATE: 24-Nov-99
PROJECT: ORCA	NO. SHEETS: 2

REV/ISS	AMENDMENTS	DRAWN	CHKD	D.O.	APVD	DATE

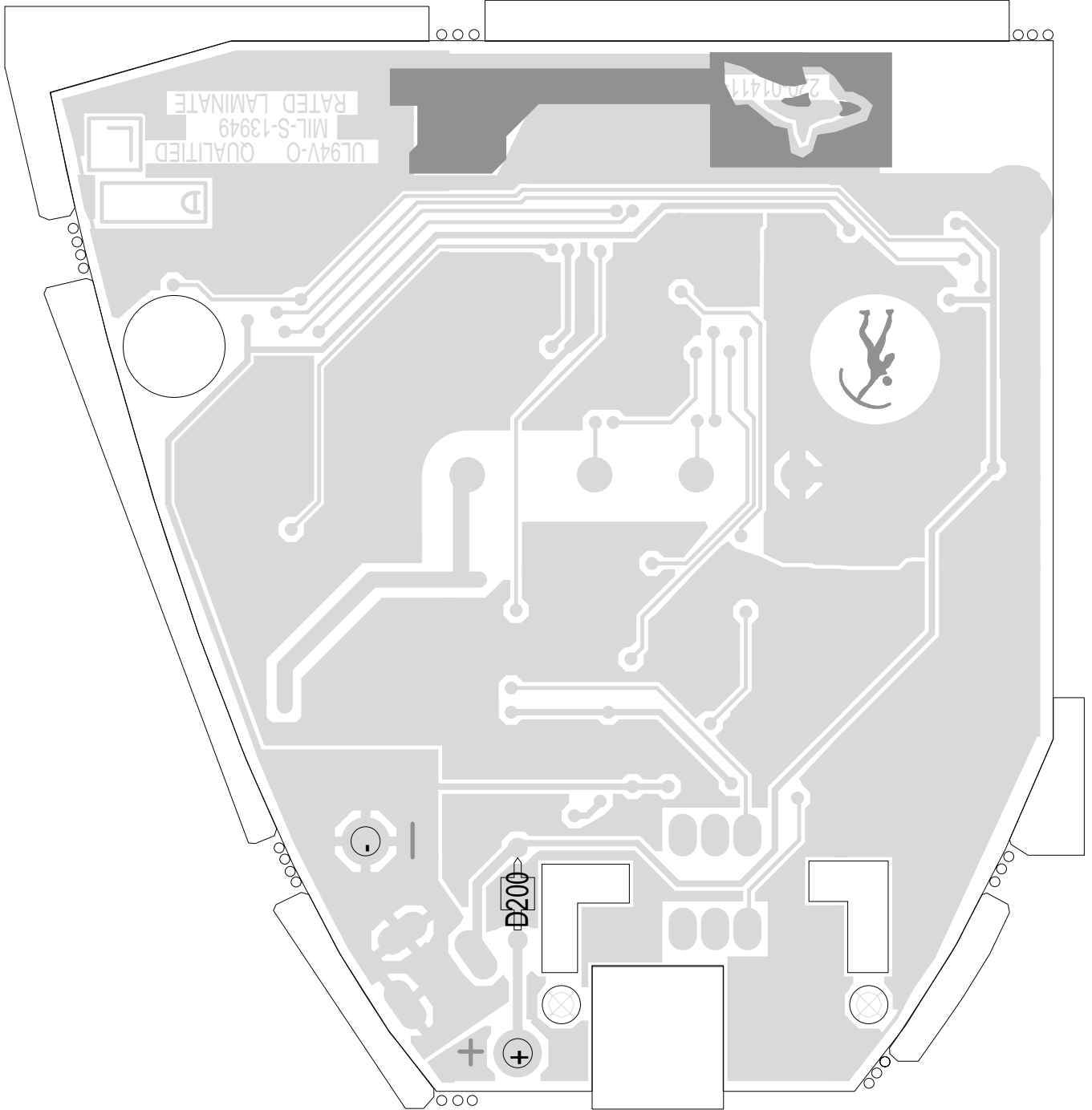
1 2 3 4 5 6

A B C D E F



TAIT ELECTRONICS	IPN: 220-01411-07	ISS: A	ID: 1.TA	DATE: 24 Nov 1999
	CHARGER PCB LAYOUT - TOP SIDE			

Scale:2.1:1 ; Rotation: 270 degrees



TAIT ELECTRONICS	IPN:	ISS:	ID:	DATE:
	220-01411-07	A	2.BA	24 Nov 1999
CHARGER PCB LAYOUT - BOTTOM SIDE				

Scale: 2.1:1 ; Rotation: 90 degrees